

Facades available:

- Lachlan, Barrington, Flinders
- Cooper, Nepean, Austin

Overall home width 8.99m

Overall home length 24.71m

Residence	154.4m ²	16.6sq
Garage	22.1m ²	2.4sq
Porch	3.7m ²	0.4sq
Alfresco	13.4m ²	1.4sq
Total	193.6m²	20.8sq

FLOORPLAN OPTIONS

We personalise our floorplans. Talk to us about our huge range of ready-to-go design options.

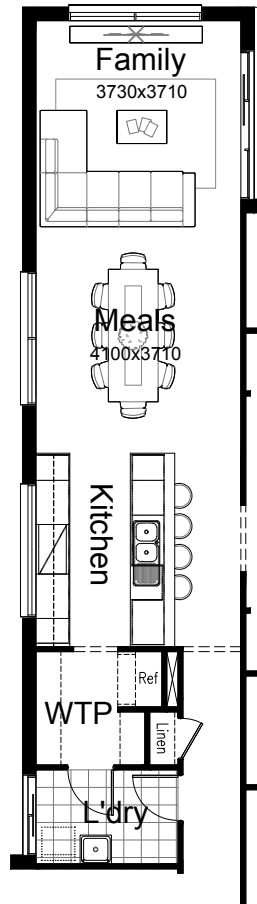
Listed details based on Lachlan facade floorplan (illustrated)

*Copyright conditions. All photos and illustrations are representative only. Floor plans and specifications may be varied by Burbank without notice, the dimensions are diagrammatic only and a Building Contract with final drawings will display correct dimensions and detail. All designs are the property of Burbank and must not be used, reproduced, copied or varied, wholly or in part without written permission from an authorised Burbank representative. Copyright Burbank Australia (NSW) Pty Ltd. ABN 88 610 822 770. NSW BL 295627C ACT BL 2016566.

Call 13 BURBANK
Visit burbank.com.au

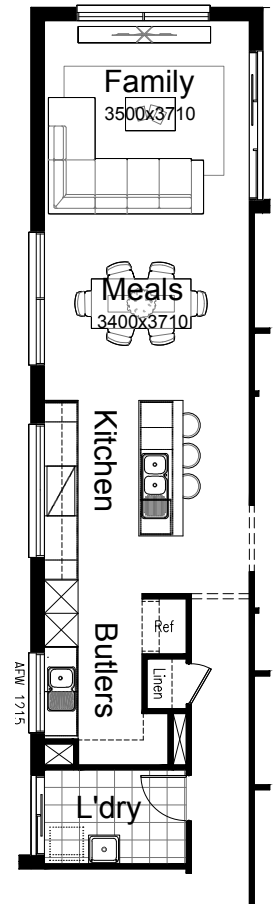
OPTION K1

Provide Galley-style Kitchen option including relocated refrigerator space with open shelf over, 900mm retractable rangehood, 900mm cooktop, 900mm under bench oven, 450mm drawer unit, dishwasher provision, microwave provision with pot drawer, 1No. 900mm base cupboard, 3No. 800mm base cupboards, 2No. 450mm base cupboards, 2No. 800mm overhead cupboards, 2No. 450mm overhead cupboards, additional bench top and tiled splashback to suit. Option moves Kitchen benches 390mm into Meals/Family.



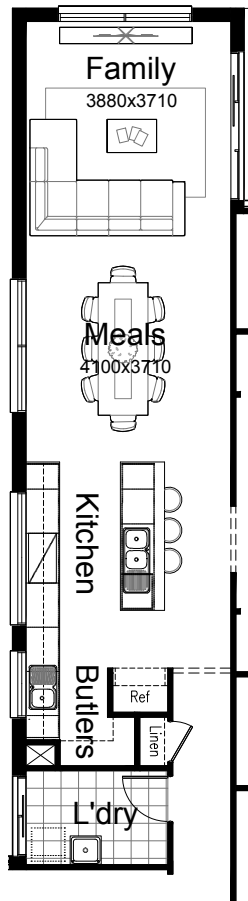
OPTION K3

Provide Butler's Pantry Kitchen option including relocated refrigerator space with open shelf over, 900mm retractable rangehood, 900mm cooktop, 450mm drawer unit, dishwasher provision, 2No. 900mm base cupboard, 4No. 800mm base cupboards, 1No. 400mm base cupboard, 2No. 800mm overhead cupboards, 2No. 350mm overhead cupboards, 2No. 600mm wall oven towers with microwave provisions and pot drawers, additional bench top and tiled splashback to suit with removal of bulkhead so bench runs through. Additional single bowl sink and AFW1215 fixed window. Option moves Laundry and Linen closet to suit. Option moves Kitchen benches 1350mm into Meals/Family. Note: Option not available in conjunction with option IP4.



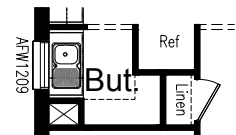
OPTION K2

Provide Butler's Pantry Kitchen option including 900mm retractable rangehood, 900mm cooktop, 900mm under bench oven, 450mm drawer unit, dishwasher provision, microwave provision with pot drawer, 1No. 900mm base cupboard, 4No. 800mm base cupboards, 1No. 450mm base cupboard, 1No. 400mm base cupboard, 4No. 800mm overhead cupboards, 1No. 450mm overhead cupboard, 1No. 400mm overhead cupboard, open shelf over refrigerator space, additional single bowl sink, additional AFW0512 fixed window, additional bench top and tiled splashback to suit with removal of bulkhead so bench and overhead cupboards run through. Option moves Kitchen benches 250mm into Meals/Family.



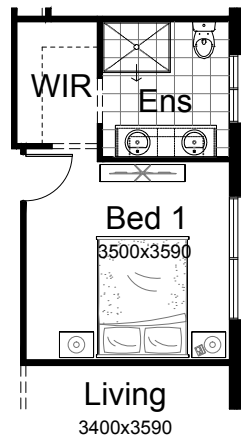
OPTION BP1

including 1No. 800mm base cupboard, 1No. 300mm base cupboard, single bowl sink and additional bench top and tiled splashback to suit. Additional AFW1209 fixed window.



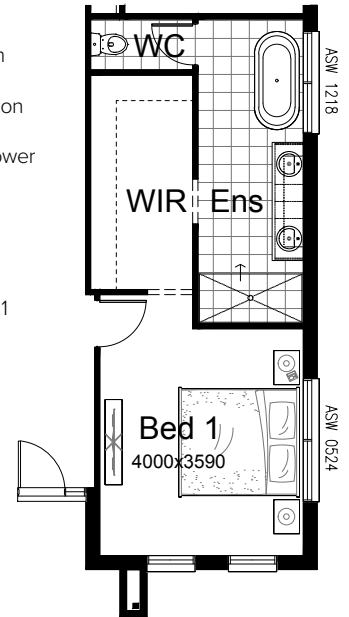
OPTION ENS1

Provide Ensuite option with 1782mm vanity with double basins, 1200x900mm tiled shower base and relocated WC. Option takes 230mm of length from Living.
Note: Option not available in conjunction with option IP1.



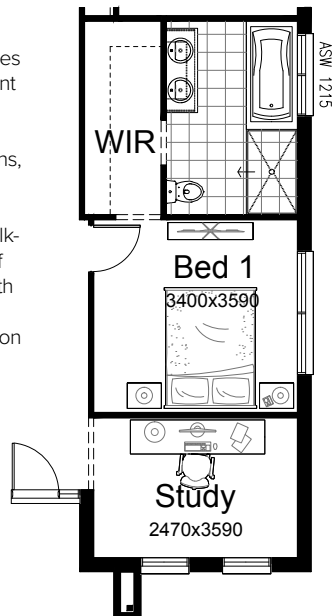
OPTION ENS3

Provide Grand Ensuite option which rearranges the layout and removes Living to the front of the home. Option includes enclosed WC with 720mm hinged door, 860x900mm tiled shower base, 2082mm vanity with double basins, freestanding bath, ASW1218 sliding window in lieu of standard, additional 1No. 450mm shelving to Walk-in Robe to suit, additional ASW0524 sliding window and Bed 1 gains 500mm in length.
Note: Option not available in conjunction with option IP1.



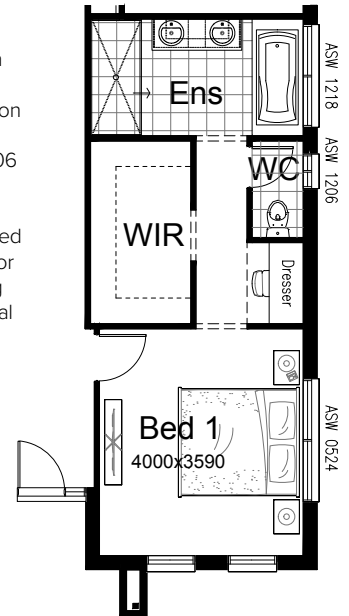
OPTION ENS2

Provide Ensuite option which rearranges the layout and creates Study to the front of the home in lieu of Living. Option includes 1500x900mm tiled shower base, 1482mm vanity with double basins, 1675mm bath with tiled hob, ASW1215 sliding window in lieu of standard, additional 1No. 450mm shelving to Walk-in Robe to suit. Option takes 100mm of length from Bed 1 and 1160mm of length from Living to create Study.
Note: Option not available in conjunction with option IP1.



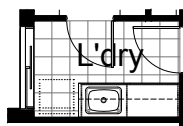
OPTION ENS4

Provide Grand Ensuite option which rearranges the layout and removes Living to the front of the home. Option includes enclosed WC with 720mm hinged door and additional ASW1206 sliding window, 2060x900mm tiled shower base, 1582mm vanity with double basins, 1675mm bath with tiled hob, Dresser with built-in desk, mirror and bulkhead over, ASW1218 sliding window in lieu of standard, additional 4No. 450mm shelving to Walk-in Robe to suit, additional ASW0524 sliding window and Bed 1 gains 500mm in length.
Note: Option not available in conjunction with option IP1.



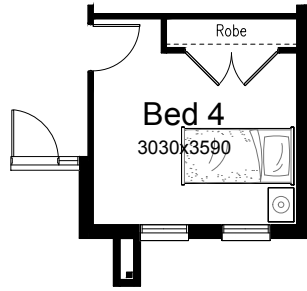
OPTION LD1

Provide Laundry upgrade including laminate base cupboards and stainless steel inset trough including 1No. 800mm base cupboard, 1No. 900mm base cupboard, 1No. 800mm overhead cupboard, 1No. 900mm overhead cupboard, additional benchtop and tiled splashback to suit.



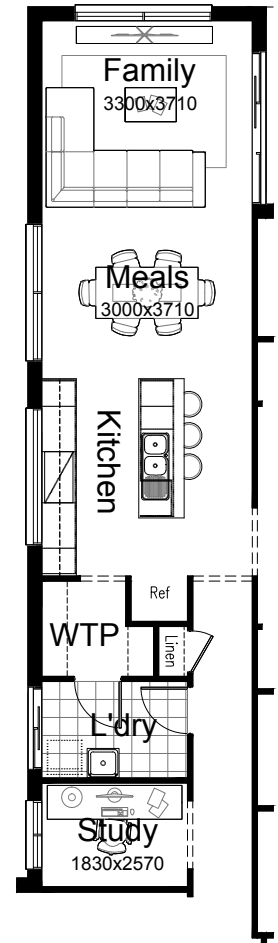
OPTION IP1

Provide 4th bedroom option in lieu of Living. Provide additional 820mm hinged door in lieu of bulkhead, standard built-in Robe with 2No. 820mm hinged door and 450mm shelf and hanging rail.
Note: Option not available in conjunction with option ENS2, ENS3, ENS4 or IP1.



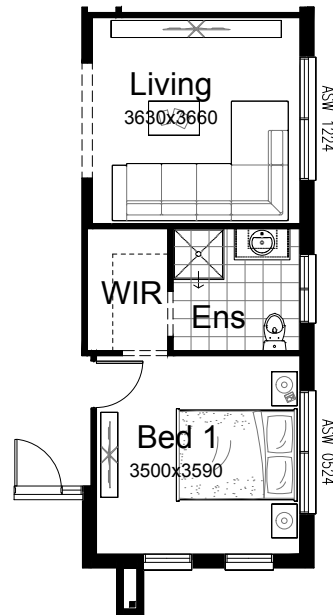
OPTION IP4

Provide floor plan option which provides Study behind Laundry with 300mm deep bulkhead entry and additional ASW1212 sliding window. Option moves Kitchen benches 1920mm into Meals/Family. Note: Option not available in conjunction with option K3.



OPTION IP2

Provide floor plan option which swaps the location of Bed 1 and Living moving Bed 1 to the front of the home. Provide 180mm wide nib walls and 300mm deep bulkhead to Living with additional ASW1224 sliding window. Provide additional ASW0524 sliding window to Bed 1 in lieu of standard.
Note: Option not available in conjunction with option ENS2, ENS3, ENS4 or IP1.



OPTION IP3

Provide Bathroom option which rearranges the layout providing 1482mm vanity with double basins and ASW1215 sliding window in lieu of standard. Option removes Linen closet to Passage to accommodate.

